

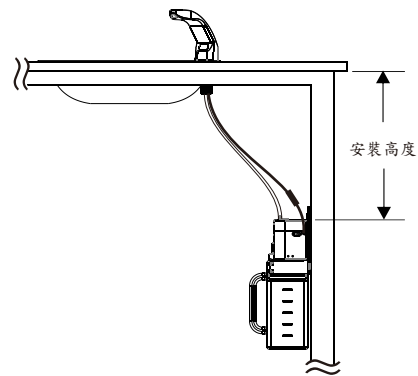
檯面式給皂機

1. 產品規格

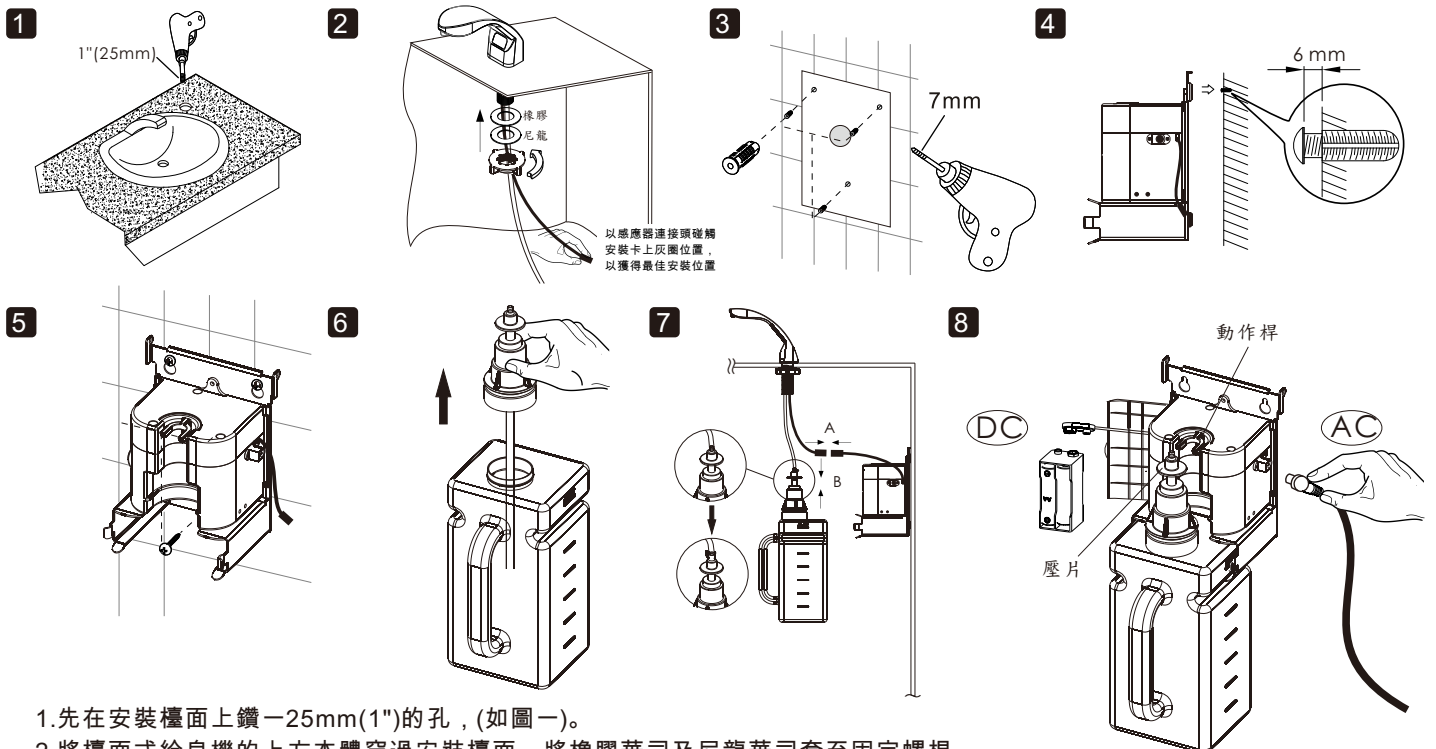
- 產品規格(W x H x D) 46mm x 184mm x 147mm (1.81" x 7.24" x 5.79")
- 皂罐容積 {ml(fl oz)} 1500(50.7)
- 整流器需求 輸出為 6 VAC
- 電池需求 鹼性 (1.5V) AA 電池四顆
- 電池壽命 20,000給皂或一年
- 室溫 { °C(°F)} 5 ~ 40 (41 ~ 104)
- 給皂量 { ml(fl oz)} Liquid Soap : 0.034 ~ 0.051 (1 ~ 1.5) / Foam Soap : 0.02 ~ 0.026 (0.6 ~ 0.8)
- 適用黏度範圍 {cP(mPas)} 1 ~ 3000 (1 ~ 3000)
- 淨重 { kg(oz)} 1.3 (45.8)
- 使用方式 自動
- 紅色指示燈閃爍如表示電壓不足，請更換電池 (≤5.2V)。
- 紅色指示燈如持續亮著表示皂罐皂液不足，請填充皂液。
- 綠色指示燈如持續亮著表示動作桿無法正常作動，請確認使用皂液類型是否正確。

2. 建議安裝位置

- 安裝高度 ≤25CM(9-27/32")



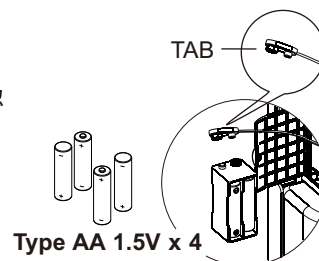
3. 安裝說明



1. 先在安裝檯面上鑽一25mm(1")的孔，(如圖一)。
2. 將檯面式給皂機的上方本體穿過安裝檯面，將橡膠華司及尼龍華司套至固定螺桿，再利用固定螺帽鎖至檯面(如圖二)。
3. 使用感應器連接線的長度，以接頭部份接觸到壁面為主，找出適合的控制盒組安裝位置。
4. 將安裝卡貼在適合的固定位置，並依安裝卡上孔位鑽三個7mm的孔後，將螺絲套置入(如圖三)。
5. 將2顆固定螺絲對準牆上的膨脹螺絲套旋入，但是旋入後需與牆面保持6mm的空間，以便控制盒組的裝入(如圖四)。
6. 將控制盒組掛上後，將第三顆螺絲鎖入，並將三顆螺絲都確實鎖緊(如圖五)。
7. 將閥頭總成向上拉開，填充皂液後裝回原位並聽見"卡"的聲音(如圖六)。
8. 先將A處接頭相接，再接B處接頭，使用管夾固定皂閥與輸送管(如圖七)。
9. 將皂瓶推向卡槽，安裝時請確實將閥頭壓片往下壓後再將皂罐推回，使壓片置於動作桿下方以利使用(如圖八)。
10. 安裝完成。

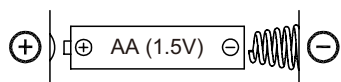
4. 更換電池

1. 打開位於控制盒左邊的電池蓋，將電池盒與連接頭分開，置換四顆鹼性AA 1.5V電池，並確認極性是否正確，
2. 將電池盒裝回原來位置。
3. 確認機台是否正確作動。
4. 亦可使用 6V DC \pm 10%之整流器作為電源。



5. 注意事項

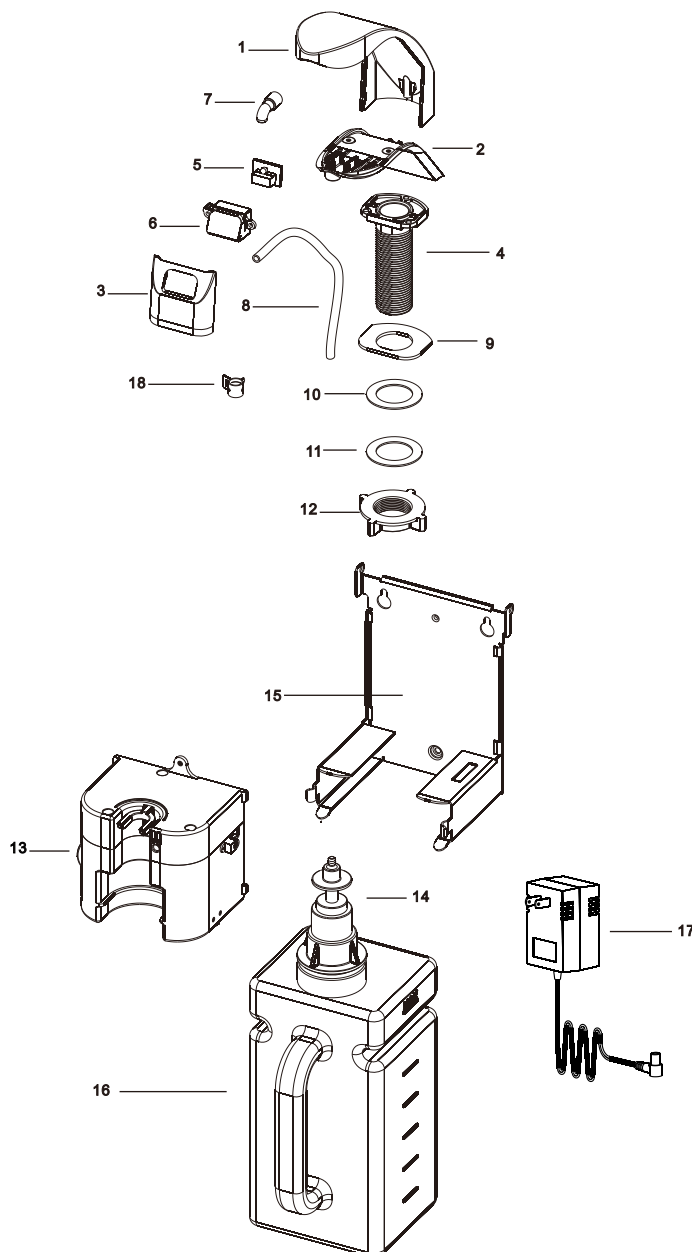
1. 請務必使用新鮮皂液，以利機器作動，如使用放置過久或黏度過高之皂液會造成機器故障或閥頭阻塞。
2. 除非是濃縮皂液，否則請勿任意稀釋皂液後使用，請不要使用內含磨砂類之皂液，並在填充皂液時，注意皂液黏度。
3. 請勿將控制盒組置入水中清洗，以免造成控制基板短路。
4. 如已更換電池後，機器仍無法正常作動，請勿進行任何修復動作，請電您的經銷商或尋求專業協助。



注意：電池極性如接錯，或許會引起機器故障。

各部位零位

1. 上蓋
2. 下蓋
3. 前板
4. 固定座
5. 感應器
6. 感應器護蓋
7. 轉角接頭
8. 輸送管
9. 橡膠華司(上)
10. 橡膠華司(下)
11. 尼龍華司
12. 固定螺帽
13. 控制盒組
14. 閥頭組
15. 牆面固定板
16. 皂罐
17. 整流器
18. 管夾



Auto Deck Mounted Soap Dispenser

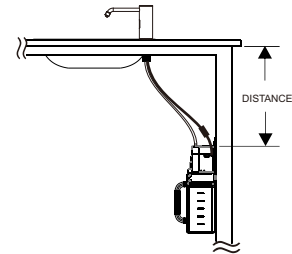
1. SPECIFICATIONS:

- Dimensions (W x H x D)

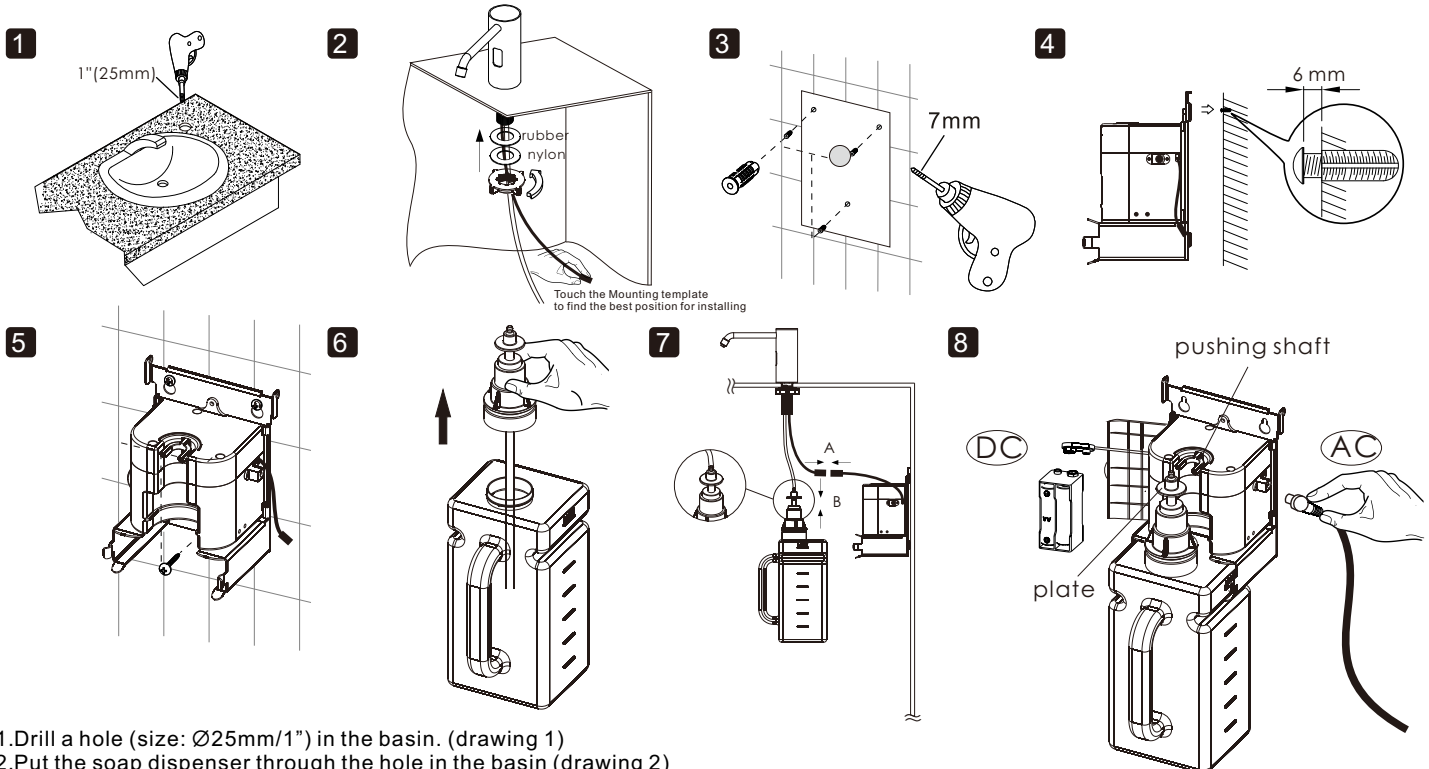
CSD11/21	46mm x 113mm x 147mm (1-13/16" x 4-7/16" x 5-25/32")
CSD12/22	50mm x 122mm x 155mm (1-31/32" x 4-13/16" x 6-1/2")
CSD13/23	38.1mm x 95.6mm x 136.5mm (1-1/2" x 3-3/4" x 5-3/4")
- Soap Tank Capacity {ml(fl oz)} 1500(50.7)
- Adaptor Type Required 6 VAC Plug-In Adaptor
- Battery Type Required Alkaline (1.5V) AA size, Qty 4
- Battery Life Estimated 20,000 cycles or 1 year
- Room Temperature { °C(°F)} 5 ~ 40 (41 ~ 104)
- Dispensing Volume { ml(fl oz)} Liquid Soap : 1 ~ 1.5 (0.034 ~ 0.051) / Foam Soap : 0.6 ~ 0.8 (0.02 ~ 0.026)
- Applicable Viscosity Range {cP(mPas)} 1 ~ 3000 (1 ~ 3000)
- Operation Mode Automatic
- A blinking **Green** light means the soap tank is empty.
- A blinking **Red** light means the battery is low (#5.2V).
- A solid **Green** light means the wrong kind of soap has been used.
- Soap dispenser will dispense once every 48 hours if there is no action in between to avoid the clog of the tip.
- After connecting to the power or refilling the soap, it will continue dispensing soap for up to maximum 10 times till user removes his hand.

2. RECOMMENDED INSTALLATION:

- DISTANCE \leq 25CM(9-27/32")



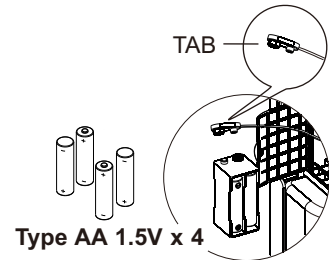
3. INSTALLATION STEPS, Tile or Dry Wall



1. Drill a hole (size: \varnothing 25mm/1") in the basin. (drawing 1)
2. Put the soap dispenser through the hole in the basin (drawing 2)
Place the rubber washer & nylon washer in the thread on the shaft.
Use the nut to fasten the soap dispenser to the basin.
3. Make sure the sensor wire can touch the wall in order to find the best position to install the control box assembly.
4. Put the mounting template in the best installation position on the wall, according to the position of the holes in the mounting template.
Then drill 3 holes (size: 7mm) and put the 3 wall plugs in the holes (drawing 3).
5. Put two fixing screws into the top wall plugs, but leave a 6mm space between the head of the screw and wall, so the control box assembly can hang properly. (drawing 4)
6. When the control box assembly has been hung on the wall, fasten the third screw into the bottom wall plug. (drawing 5)
7. Pull up the soap pump, fill in the liquid soap and then push down the soap pump until you hear it snap into place (drawing 6)
8. Connect the wires of the soap dispenser to the wire of the control box assembly. (drawing 7)
Connect the tube of the soap dispenser to the connector on the soap pump. (drawing 7)
9. Push the soap tank to the track. Make sure the soap pump plate is under the pushing shaft before you put back the soap tank, so the soap dispenser can work properly. (drawing 8)
10. Plug-in an AC adaptor or battery box to supply power. (drawing 8). Installation finished.

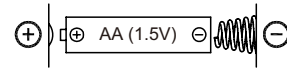
4. OPERATION INSTRUCTIONS

1. Open cover on battery compartment, remove battery box and unplug cable; install four (4) new Alkaline Type AA 1.5V batteries with correct polarity (note the +/- indication) to obtain 6V DC ± 10% at the plug.
2. Reinstall battery box .
3. Trigger the sensor with hands or a towel to check proper soap dispensing cycle ..



5. IMPORTANT NOTICE

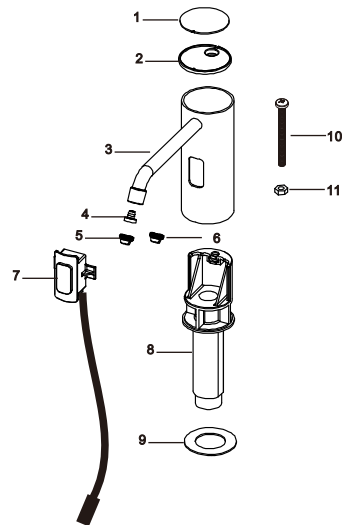
1. Use fresh new liquid soap only and clean the soap container properly before each re-fill. Deposits of old soap will lead to malfunction and jamming..
2. Do not dilute liquid soap unless concentrate and do not use soap containing abrasive. Observe indicated viscosity factor of liquid soap.
3. Do not immerse the soap dispenser in water or clean it under running water. This will lead to short circuit.
4. Should the dispenser be out of order and batteries have been replaced, do not attempt any repair work. Call your dealer for professional assistance.



Caution : Batteries installed with incorrect polarity may cause malfunction.

PART:

1. CSDX3 Nameplate
2. CSDX3 Top cover
3. CSDX3 Sus part
4. CSDX3 Elbow connector
5. CSDX3 Soap net
6. CSDX3 Outlet
7. CSDX3 Sensor
8. CSDX3 Mounting shaft
9. CSDX3 Rubber washer (top)
10. CSDX3 Screw
11. CSDX3 Screw nut



- a. Soap rubber tube
- b. Rubber washer (bottom)
- c. Nylon washer
- d. Screw nut
- e. Control box assembly
- f. Soap pump
- g. Foam pump
- h. Base plate
- i. Soap tank
- j. Adapter

